



# PRODUCT SPECIFICATION SHEET

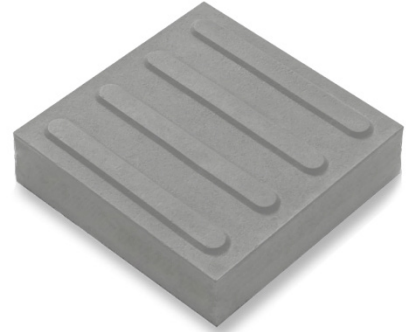
# TCSI

TACTILE GROUND SURFACE INDICATORS

Directional tactile ground surface indicators guide individuals with visual impairments by providing information about safe pathways and upcoming changes in direction, such as turns or exits.

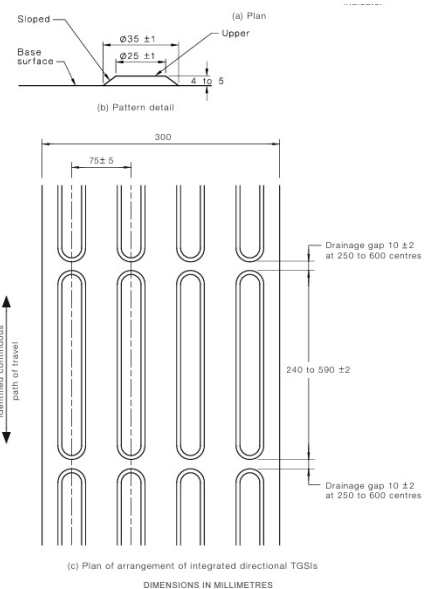
## SPECIFICATIONS

PRODUCT	Precast Concrete Integrated Tactile
CODE	CHELMD36P
SIZE	300 x 300 x 60mm
TYPE	Directional
SLIP RATING	P5 (Wet Pendulum) AS/ NZS 4586
WEIGHT	12.03 kg
COLOUR	Pewter
LRV (DRY)	46.8 (Mean Luminance Reflective)
LRV (WET)	33.4 (Mean Luminance Reflective)
SALT SAFE	Exposure Grade
SIZE TOLERANCE	+/- 3mm (Dimensions & Thickness)
MANUFACTURE	Wetcast High-Strength Concrete (48 MPa)



**PEWTER**

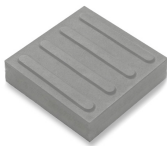
## PROFILE



## STANDARD COLOURS



SNOW



PEWTER



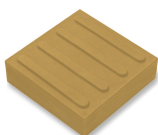
RED



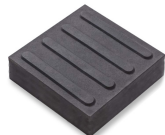
IVORY



YELLOW



CORN



VOODOO

## HOW TO SPECIFY

Copy the product name, code, size, type and colour required for the project.

Include manufacturer: Chelmstone Pty Ltd.

Ensure they are installed in accordance with manufacturer's guidelines. Including being sealed with a penetrative water based sealer.



**chelmstone**  
Design in Concrete

**P.** (07) 3279 3177

**E.** [info@chelmstone.com.au](mailto:info@chelmstone.com.au)

**W.** [www.chelmstone.com.au](http://www.chelmstone.com.au)

**A.** 30 Staple St, QLD, 4073